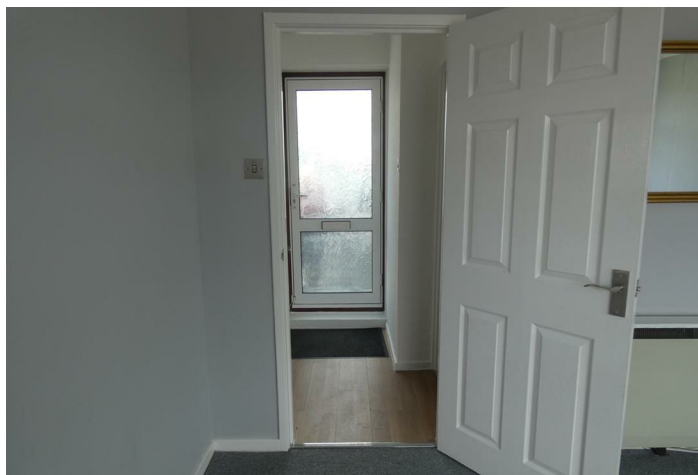




10 Staward Avenue , Seaton Delaval NE25 0JG

- Available Immediately
 - Fitted Kitchen
 - Popular Location
 - Bathroom/w/c
 - Garage
- First Floor Flat
- Double Bedroom
 - 13'0 Lounge
- Communal Garden Areas
- Viewing Advised

£425 PCM





MI Estates is pleased to present A first floor flat which is available immediately. Comprises Lounge, Fitted Kitchen, Double Bedroom, Bathroom/w.c. The property has the benefit of a garage and communal garden areas.
**** viewing is recommended****



ENTRANCE

Double glazed entrance door to lobby with laminate flooring.

LOUNGE

13'11" x 10'8"

Upvc double glazed window to the front elevation, coving to the ceiling.

KITCHEN

12'4" x 5'8"

Upvc double glazed window to the side elevation. Fitted with a range of wall and floor units with roll top work surfaces incorporating stainless steel sink unit, electric cooker, fridge and dishwasher. Tiled splash backs.

BEDROOM

10'7" x 8'10"

Upvc double glazed window to the front elevation. Storage cupboard and free standing bedroom furniture.

BATHROOM/W.C

White suite comprising panelled bath with electric shower over, pedestal wash hand basin, low level w.c. Part tiled.

EXTERNAL

Communal gardens.

Garage



Local Authority Northumberland County Council
Council Tax Band A
EPC Rating C
Deposit £425
Furnishing Part furnished

Energy Efficiency Rating		Current	Potential
Very energy efficient - lower running costs			
(92 plus) A			
(81-91) B			
(69-80) C		69	79
(55-68) D			
(39-54) E			
(21-38) F			
(1-20) G			
Not energy efficient - higher running costs			
England & Wales		EU Directive 2002/91/EC	

Environmental Impact (CO ₂) Rating		Current	Potential
Very environmentally friendly - lower CO ₂ emissions			
(92 plus) A			
(81-91) B			
(69-80) C			
(55-68) D			
(39-54) E			
(21-38) F			
(1-20) G			
Not environmentally friendly - higher CO ₂ emissions			
England & Wales		EU Directive 2002/91/EC	



ML Estates Lettings Office
27 Avenue Road, Seaton Delaval, Tyne
And Wear, NE25 0DT

Contact
0191 237 60 60
lettings@mlestates.co.uk
www.mlestates.co.uk

Agents Note: Whilst every care has been taken to prepare these particulars, they are for guidance purposes only. All measurements are approximate and for general guidance purposes only and whilst every care has been taken to ensure accuracy, they should not be relied upon and potential buyers/tenants are advised to recheck the measurements.